

NRAM

Versatile Multipurpose Raman Probe

Attalon's NRAM Raman Probe is a general-purpose, robust, immersion-ready tool designed to simplify Raman spectroscopy measurements in both process and laboratory settings.

This streamlined probe allows users to effortlessly collect reproducible spectra from a wide range of samples, including liquids, solids, slurries, powders, and heterogeneous mixtures, in seconds and without any sample preparation. When used with our Raman Analyzer, it delivers precise, real-time compositional measurements.

Built for demanding environments, the probe features a sapphire optical window, corrosion-resistant design, hermetically sealed probe tip, and a robust pressure rating of 30 bar for the probe tip, ensuring reliable performance in high-pressure and high-temperature chemical applications.

Its proven accuracy and reproducibility make it an ideal choice for critical measurements across various sectors, including biopharmaceutical, pharmaceutical, food and beverage processing, polymer manufacturing, and hazardous chemical applications.



* Pictured here with SIERRA™ System

FEATURES

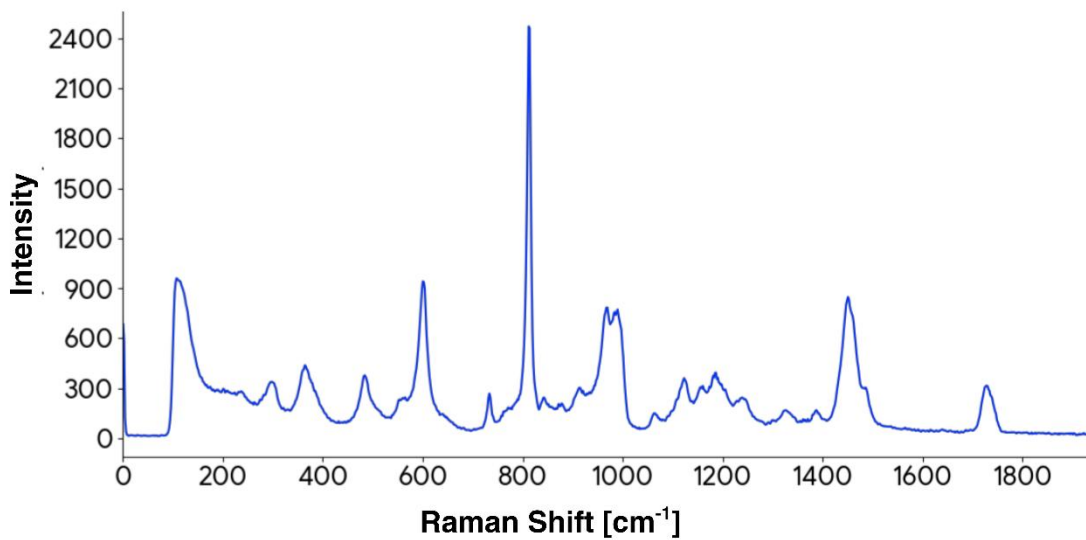
- Immersion probe for immediate, touch-based measurements
- Measures all material types, including liquids, solids, slurries, powders, and complex mixtures
- Simple design for exceptional measurement accuracy and high reproducibility
- Built to withstand the most demanding chemical, high-pressure, and high-temperature environments

APPLICATIONS

- Biopharmaceutical manufacturing
- Pharmaceutical manufacturing
- Food and beverage processing
- Polymer and plastic manufacturing
- Hazardous chemical applications
- High pressure and high temperature

Specifications	-001	-002
Wavelength [nm]	785	
Cut off Wavelength [cm^{-1}]	120	
Excitation Fiber	FC/PC 105 micron 0.22 NA	
Collection Fiber	FC/PC 200 micron 0.22 NA	SMA 200 micron 0.22 NA
Body material	Stainless Steel 316 L	
O-Ring Material	FDA EPDM	
Autoclave CIF/SIF	Probe Tip Only	
Optical Window	Sapphire	
Hermetically Sealed	Probe Tip Only	
Temperature (Probe Tip)	-20° to 120° C	
Pressure (Probe Tip)	30 bar	

Sample spectra of PMMA



Outline Drawing (all dimensions in mm)

